

Installation
Meeting the prerequisites
Updating the Windows 95 winsock file
Installing SAP GUI 6.20
Creating a Purchase Requisition Approval icon
Installing from a CD

## Installation

**Note:** If you only have a **dial-up connection** and need to install SAP GUI 6.20, see the instructions for [installing from a CD](#).

The process of installing and configuring the SAP Graphical User Interface (GUI) 6.20 involves the following tasks:

- Meeting the prerequisites.
- **If you use Windows 95**, updating your Winsock file.
- Installing SAP GUI 6.20.
- Creating a Purchase Requisition Approval icon on your desktop if you are a PR approver.

The rest of this page gives details for completing each of these tasks. We suggest that you **print this page** for reference as you work.

### Related Sites

[SAP&i2 Upgrade Project](#)

[Enterprise Buyer](#)

### Meeting the prerequisites

Before installing SAP GUI 6.20, be sure you have *at least*:

- The netDeploy Launcher application that allows ESD to install SAP GUI 6.20. netDeploy is available from the [ESD web site](#). If you have installed software from ESD before, you have netDeploy.
- Microsoft Internet Explorer 5.0 or higher.
- Monitor colors: 256.
- Monitor resolution: 1024x768.
- Monitor size: 15 inches.
- Processor speed: 233 Mhz.
- Random Access Memory (RAM): minimum 64 MB, recommended 128 MB.

**Note:** At 64 MB, you may experience performance issues.

- **For Pick, Pack, Label, and Ship Workstations:**

- Minimum Random Access Memory (RAM): 256MB
- Operating System: Windows 2000 or Windows XP.

**Note:** On Ship Workstations, be sure to **uninstall** SAP GUI 4.0b after you finish installing SAP GUI 6.20.

- Free space on hard drive: 150 MB on drive C:\.
- At least 20 minutes to complete the installation, depending on your workstation configuration.

If you need help in determining whether your workstation meets these prerequisites, contact the Central Help Desk at 972-575-4357 or 1-800-527-4740 or on the web at:

<https://stars.itg.ti.com/sites/CentralHelpDesk.html>

### Updating the Windows 95 winsock file

**Note:** Perform this task **only** on Windows 95 workstations. If you **do not use** Windows 95, **skip this task** and go on to [Installing SAP GUI 6.20](#).

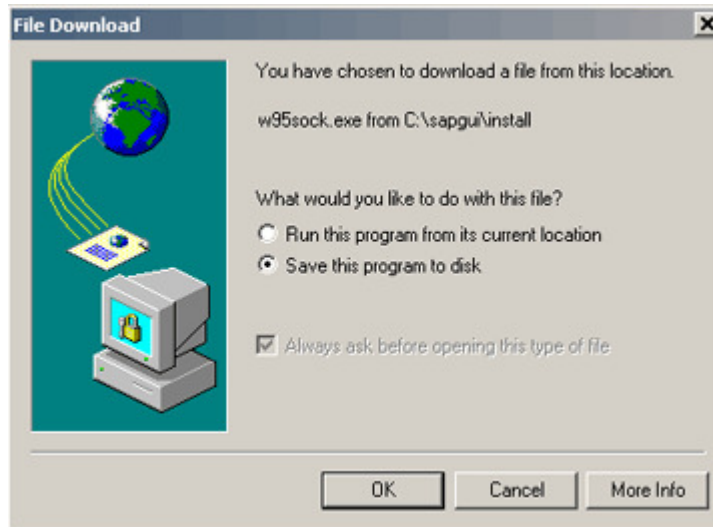
**If you use Windows 95**, before you install SAP GUI 6.20, you need to download a run a file to ensure that you have the latest winsock settings. To update your winsock file:

1. To download the file, click on the link below.

[w95sock.exe](#)

2. If you are using Netscape Navigator as your browser, the Save As dialog box appears. Go on to step 3.

If you are using Microsoft Internet Explorer as your browser, the File Download dialog box appears.



- a. In the File Download dialog box, be sure the radio button labeled **Save this program to disk** is selected.
- b. Click on the **OK** button.

The Save As dialog box appears.



- In the Save As dialog box, use the navigation options at the top to navigate to the location to which you want to save the file. No specific location is required. However, keep track of the location you choose so that you can find the file later.

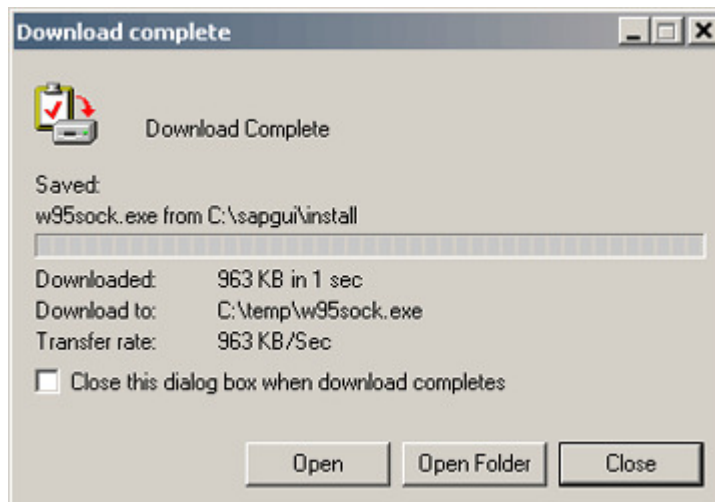


- Click on the **Save** button.

Your browser downloads the file to the location you chose on your hard drive.

- If you are using Internet Explorer, when the Download Complete dialog box appears, click on the **Open** button.

The file runs and updates your winsock settings.

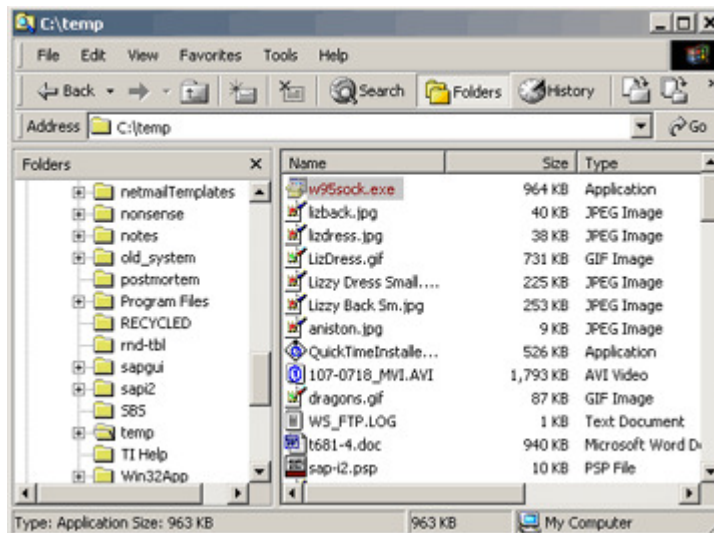


If you are using Netscape Navigator, you will not see the Download Complete dialog box. Instead:

- a. In your Windows task bar, right click on the **Start** button.
- b. In the menu, click on **Explore**.

Windows Explorer starts.

- c. In the Explorer window, navigate to the location to which you downloaded the file **w95sock.exe**.



- d. Double click on the file name.

The file runs and updates your winsock settings.

You have completed updating your winsock file. If you use a version of Windows *other than* Windows 95, you **do not** need to update your winsock file. Go on to [Installing SAP GUI 6.20](#).

## Installing SAP GUI 6.20

**Note:** **Do not uninstall the old SAP GUI** when you install the new one. Keep the old one on your workstation as a back-up for now.

Additionally, **do not** try to install SAP GUI 6.20 **over a dial-up connection**. If you only have dial-up and need to install SAP GUI 6.20, please submit a ticket.

The SAP Graphical User Interface (GUI) 6.20 is available at TI from the Enterprise Software Distribution (ESD) website. Although you will install it from ESD, you will not experience the version checking each time you start it that occurred in the previous SAP GUI. To perform the installation:

1. To open a new browser window and display the ESD website, click on the link below.

<http://esd.itg.ti.com/>

### Enterprise Software Distribution - ESD Login

**IMS User ID:**

**IMS Password:**

**Operating System:** \*\*Select an Operating System\*\*

This is the login page for ESD (Enterprise Software Distribution) software downloads. The ESD tool facilitates the distribution and management of enterprise licensed software to all Windows/Intel clients (workstations) at Texas Instruments.

**NOTE:** You **must** have netDeploy **Launcher** loaded on your workstation to download the applications marked with the "ADD TO ORDER" button.

**Windows NT/2000/XP Users:** Unless otherwise noted, you **must** be an administrator on your NT/2000/XP workstation to download software from this site. Please see your site administrator if you are not an administrator on your workstation.

- On the ESD Login page, in the IMS User ID field, type your AID/XID.

For TIers, this is **a** followed by your seven digit employee number, zero-filled if necessary, for example, *a0123456*. For contractors, this is your XID.

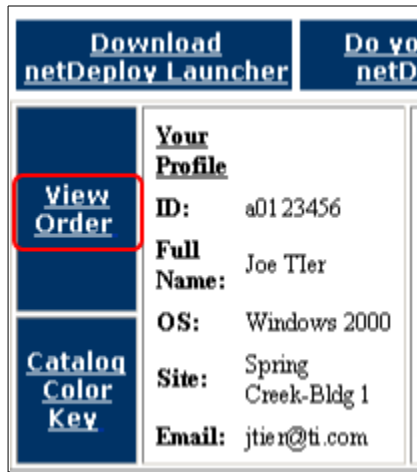
- In the IMS Password field, type your Enterprise (ITSS/Kerberos) password.

This is the same password you use to log onto things like my.it.com, IMS, ITSS, Kerberos, the TI Web Login page, MYPAY, STARS, Expense Manager.

- In the Operating System drop-down list, click on the name of your operating system.
- Click on the **Logon** button.
- On the next page, locate SAP GUI 6.20 and click on the **Add to Order** button to its right.

S					
SAP CBT R40	1	SAP CBT Release 4.0	Yes	<a href="#">More Info</a>	<input type="button" value="Add to Order"/>
SAP CBT Release 2 Setup	2.3	SAP CBT Release 2 Training	Yes	<a href="#">More Info</a>	<input type="button" value="Download Now"/>
SAP Computer-Based Training	1	SAP Computer-Based Training - Release 2 and Release 4	Yes	<a href="#">More Info</a>	
SAP GUI	4.0b	User Interface for R3 database.	Yes	<a href="#">More Info</a>	
Sap Gui	6.20.46	User Interface for R3 database.	Yes	<a href="#">More Info</a>	<input type="button" value="Add to Order"/>

- When the page reappears, at the top of the page, click on the **View Order** link.



8. On the Confirm Your ESD Order page, click on the button labeled Download Now.



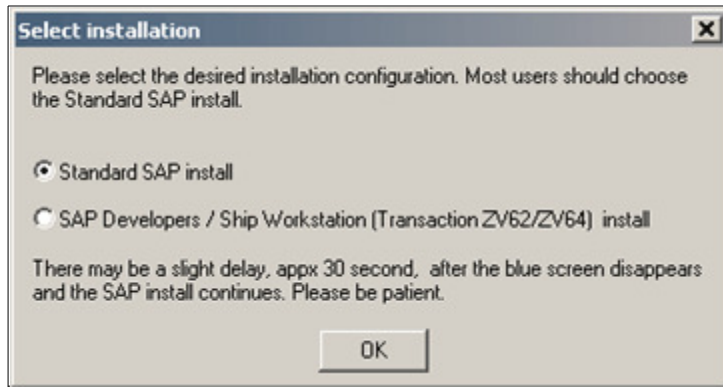
9. On the Success page, if you are using Internet Explorer as your browser, wait for the netDeploy launcher to start.  
If you are using Netscape Navigator as your browser:
  - a. In the warning dialog box, click on the radio button labeled **Open it**.
  - b. Click on **OK**.

The netDeploy launcher starts and launches the installation program. The Sap Gui 6.2 dialog box appears.



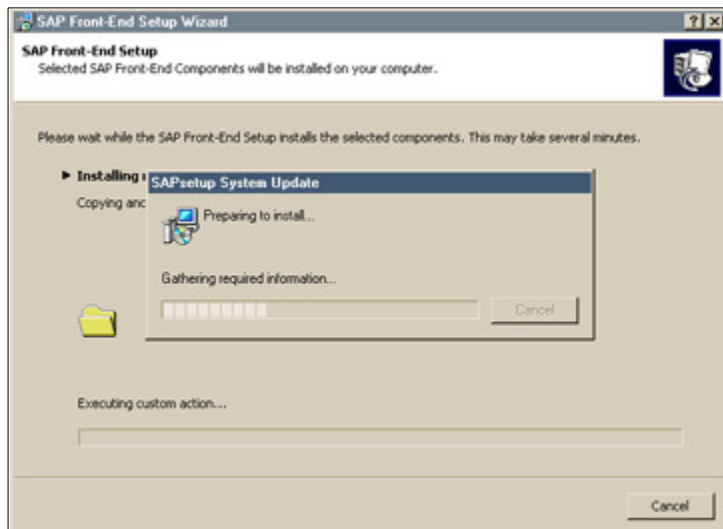
10. In the dialog box, click on **OK**.

After a brief delay, the blue installation background screen disappears and the Select Installation dialog box appears.



11. In the Select Installation dialog box:
  - If you are a standard SAP user, click on the radio button labeled **Standard SAP install**. Most users should choose the standard install option.
  - If you use Ship Workstation (Transaction ZV62/ZV64) or are an SAP developer, click on the radio button labeled **SAP Developers / Ship Workstation (TransactionZV62/ZV64) install**.
12. Click on **OK**.

The installation program begins installing SAP GUI 6.20.

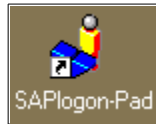


13. If the SAPSetup dialog box appears indicating that your computer needs rebooting, ensure that all other applications are closed and, and in the dialog box, click on **No**.

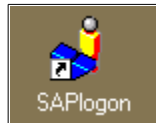
If the SAPSetup dialog box does not appear, do not worry about it. Some computers do not require a reboot.

**Note:** If your computer reboots and the installation program does not restart, return to ESD and begin the download and installation again.

When the installation is complete, you will see two new icons on your desktop.



The SAPLogon-Pad icon gives access to log-on profiles on all servers. However, you cannot add, edit, or delete any of these profiles.



The SAPLogon icon allows you to add, edit, or delete log-on profiles.

You have finished installing SAP GUI 6.20. We encourage you to use it to work with SAP transactions.

If you frequently perform Purchase Requisition Approvals, go on to [Creating Purchase Requisition Approval icon](#) to create a desktop icon that gives you direct access to the PR Approval transaction.

For information about creating desktop icons for other transactions, see [Tips & Tricks](#).

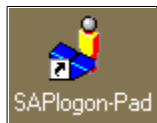
### Creating Purchase Requisition Approval icon

If you frequently perform Purchase Requisition Approvals, you can create an icon on your desktop that gives you direct access to the PR Approval transaction without having to navigate through many levels of menus. Instead, you can double click on the icon, log on, and go directly to the transaction.

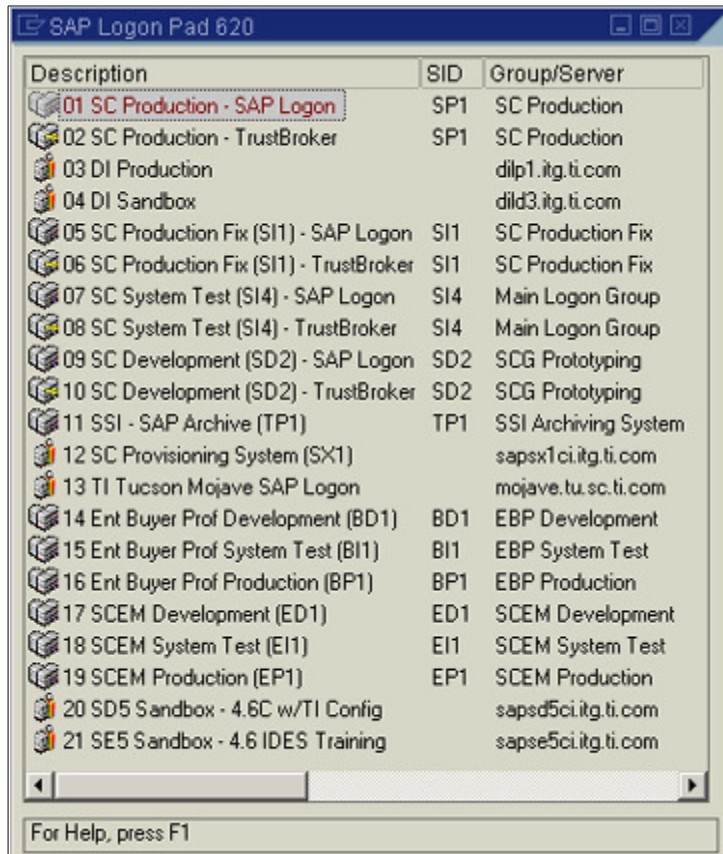
**Note:** You must have installed SAP GUI 6.20 to create a Purchase Requisition Approval icon.

To create a PR Approval icon:

1. On your desktop, double click on the **SAPLogon-Pad** icon.

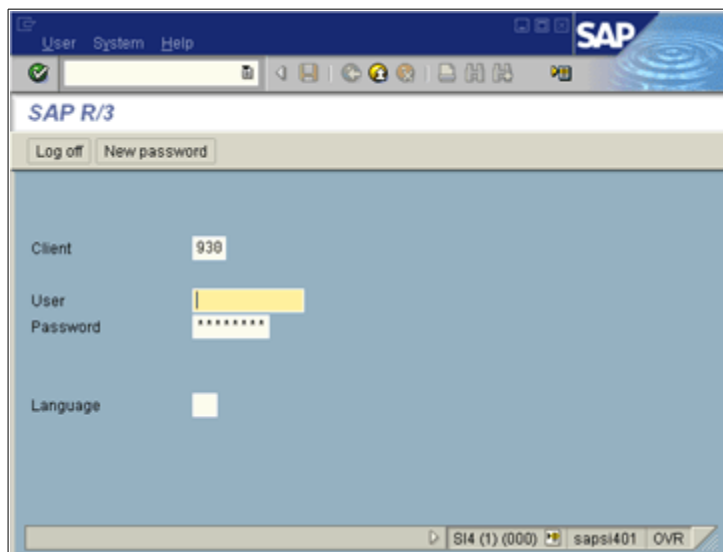


A list of log-on profiles appears.



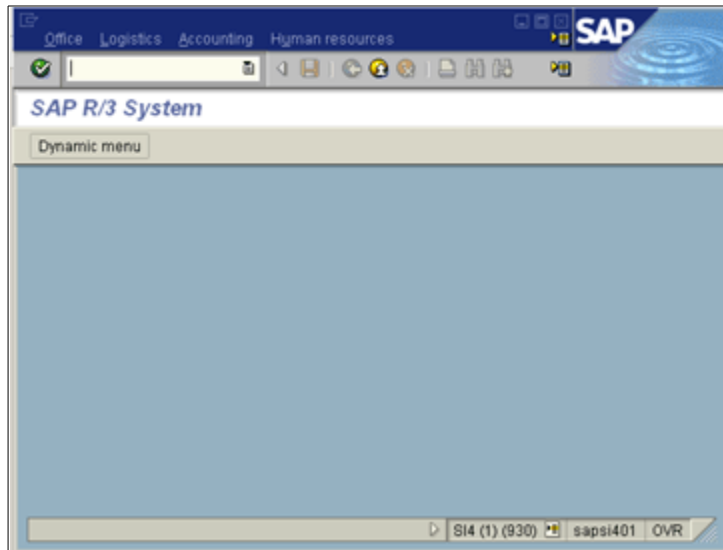
2. Double click on the name of the log-on profile you normally use.

The log-on form appears.

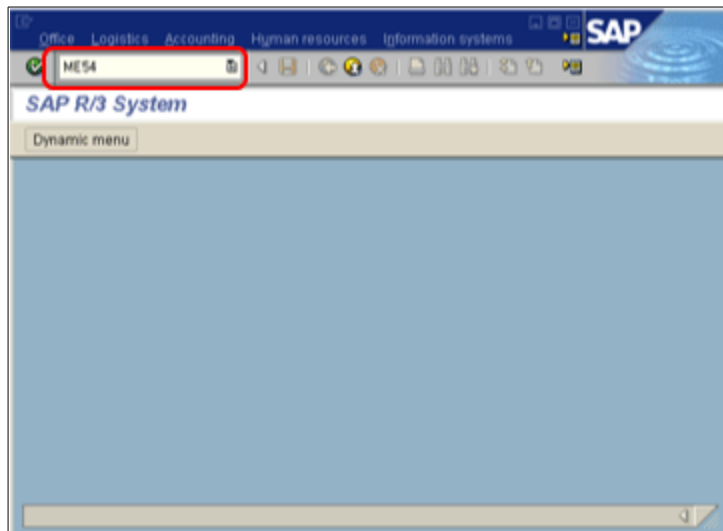


3. In the User field, type your SAP user ID.
4. In the Password field, type your SAP user password.
5. Press the **Enter** key.

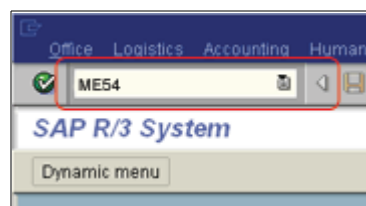
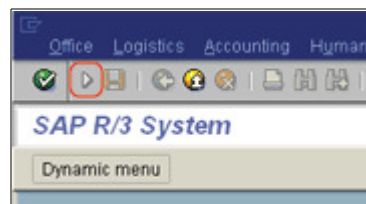
The main SAP dialog box appears.



6. In the transaction field in the upper left corner of the dialog box, type **ME54**.

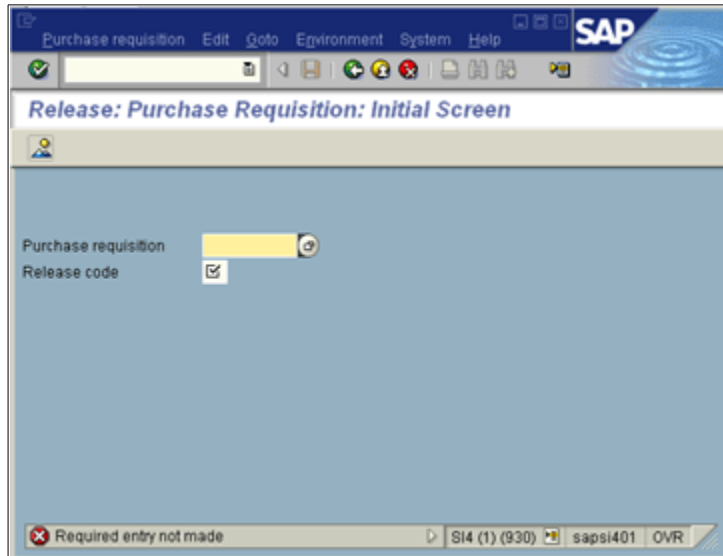


**Note:** If the transaction field does not appear on your dialog box, click on the white arrow at the top of the dialog box to display the field. Then, type **ME54**.



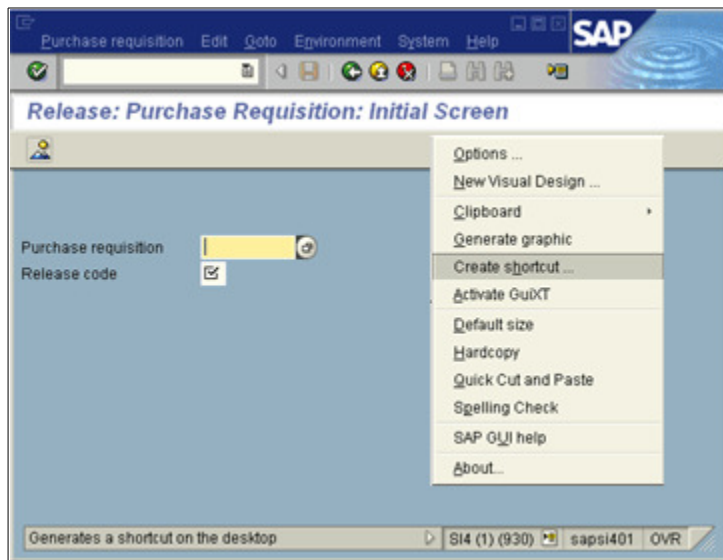
7. Press the **Enter** key.

The transaction appears.



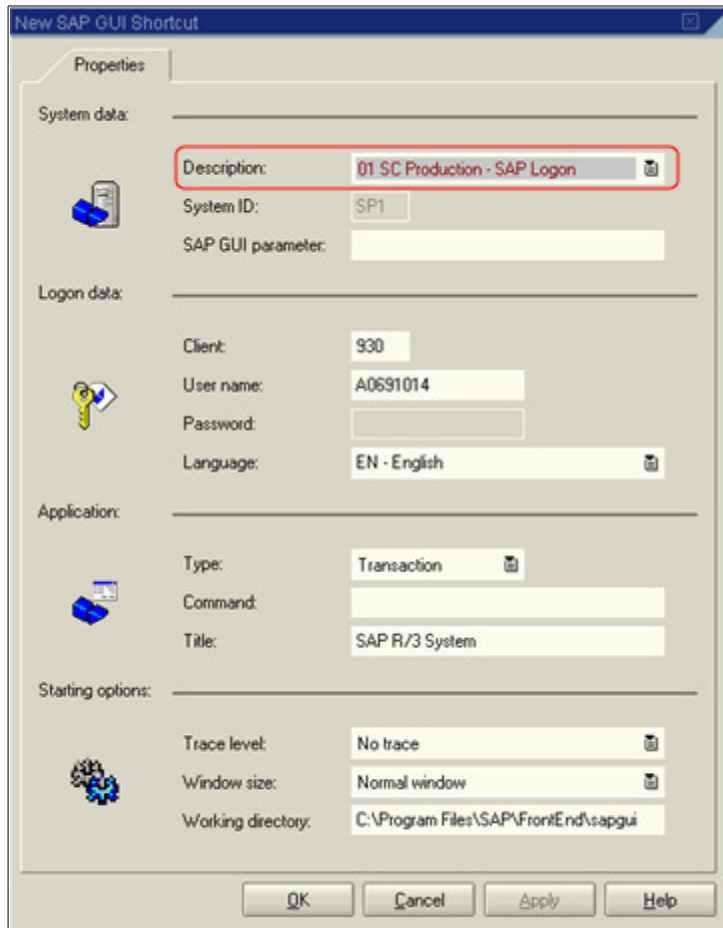
8. When the transaction appears on the screen, press the **Alt-F12** keys at the same time.

A new menu appears.



9. In the menu, click on **Create Shortcut**.

The New SAP GUI Shortcut dialog box appears.



10. In the New SAP GUI Shortcut dialog box, in the Description drop-down list, click on **01 SC Production - SAP Logon**.
11. Click on **OK**.

A message box appears indicating that the shortcut was created.

12. In the message box, click on **OK**.

An icon for the PR Approval transaction appears on your desktop.



When you double click on the icon, you will log on, and go directly to the transaction. You have finished creating a Purchase Requisition Approval icon.



TI's Global Information Technology Services Provider

© Copyright 2003 Texas Instruments Incorporated. All rights reserved.

[Feedback](#) on the website only.

For problems with SAP GUI 6.20, submit a [ticket](#).